

BACKYARD HONEY: (SECTION H)



Entry Information:

Entry Fee:	\$3.00 for the first entry \$2.00 for each additional entry
Closing Date for Entries:	6.00pm Thursday 7 th November 2024
Post Entry Forms to:	Entry Secretary, Lilydale A&H Soc., PO Box 70, Lilydale 3140
Or Email Entry Forms to:	secretary@lilydaleyarravalleyshow.com.au
Payment Online:	Fees can be paid online as per address on the entry form
Chief Steward:	Cathy Dibley - 0419 136 150

All exhibits MUST be delivered to:	Jean Eales Pavilion, 27 Market Street, Lilydale 2.00pm – 8.00pm Monday 11 th November 2024
---	--

The Honey Section is run in conjunction with the Yarra Valley Bee Group, which aims to support local and backyard beekeepers, and has an emphasis on sustainable and natural beekeeping.

<http://www.yarravalleybeegroup.org.au/>
<https://www.facebook.com/YarraValleyBeeGroup/>

CLASSES

1. Jar of Liquid Honey (H)
2. Jar of Creamed Honey (HCR)
3. Jar of Crystallised Honey (HCRY)
4. Capped Frame of Honey (F)
5. Wax Block (W)
6. Cut Honeycomb Block (CHB)
7. Home Made Mead (M)-Sub classes M1A Dry Mead, M1B Semi-sweet Mead and M1C Sweet Mead

SASHES will be awarded for Best in Show in each class.

PRIZE CARDS will be awarded up to Third placing for each class.

REGULATIONS

(To be read in conjunction with General Regulations)

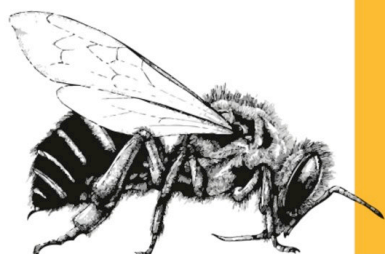
1. Entrance is open to any Beekeeper whose hives are located preferably but not exclusively in the Local Council/Shires of: Yarra Ranges, Cardinia, Casey, Knox, Maroondah, Nillumbik, Baw Baw, Murrindindi, Banyule, Manningham or Whittlesea.
2. Only one entry per exhibitor per class per hive location is permitted.
3. Each exhibit must have been produced since the last Lilydale Show.
4. Judge/s have the right to sample honey, honeycomb or mead.
5. Section tickets will be allocated when exhibits arrive. Hold duplicated entry form for **collection of exhibits, after 4.30pm on last day of Show.**
6. The Judges may withhold awards when the exhibits are, in their opinion, unworthy.

7. The Society will take all care but will not be responsible for any loss or damage; the exhibits being the sole risk of the exhibitor.
8. The Judge/s' decision will be final.
9. **Honey Jars** to be presented in a 375ml/500gm round jar with a 63mm plain gold, white or black lid and no wax. Jar shall be filled halfway between lid rim and top.
10. **Honey Liquid** will be judged on Colour (25 Points) Density (25Points), Flavour (25Points), General Appearance (15 Points) and Aroma (10 Points) for a total of 100 points.
11. **Creamed Honey** will be judged on Firmness of set (25 points), Texture of granulation (smooth, fine) (25 points), Absence of impurities (10 points), Colour (10 points), Flavour (15 points) and Aroma (15 points) for a total of 100 points.
12. **Crystallised Honey** will be judged on evenness of grain (30points), Flavour (30 points), Firmness (30 points) and Colour (10 points).

Suitable new jars are available for purchase from the Yarra Valley Bee Group at the Sep & Oct gatherings. See websites above.

13. **Capped Frames** may be of any design; Langstroth, top-bar, Warrè or a custom design. **Entrants are responsible for supplying their own transparent, insect-proof display cabinet, devoid of any markings or brandings.** Cabinet must be easily opened, and comb removed for judging. Frame and Comb Honey will be judged on Fullness (30Points) Colour of Capping (30 Points), Evenness (20 Points) General Appearance (20Points) for a total of 100 points. **LEAKING COMB WILL NOT BE ACCEPTED.**
14. **Wax Block** must be presented as clean filtered, smooth, unbleached 100% bee's wax. Wax block must weigh 200gms and be wrapped in clear plastic wrap. The wax block will be judged on Colour and Odour (Straw, canary, yellow, lemon-yellow) (30 points), Cleanliness – freedom from propolis, honey and impurities (35 points), Uniformity of appearance (20 points), Freedom from cracking and blemishes (15 points) for a total of 100 points.
15. **Cut Honeycomb Block** will be presented in a square lidded container and weigh 200gms before being placed into the container, must be brood free, have an even surface and no honey leaking from the honeycomb. Cut honeycomb will be judged on container appearance and suitability (10 points), Uniformity of appearance (25 points), Absence of uncapped cells (15 points), Absence of watery capping's (15 points), Cleanliness and absence of travel stain, pollen, granulation and crushed wax (20 points), Absence of liquid honey (10 points) and Neatness and uniformity of cut (15 points) for a total of 125 points.

16. **Mead** must be presented in screw top, clean colourless glass wine bottles without lettering or ornamentation of any kind. Only home-producer or amateur meads may be entered. All meads are required to have the source(s) of the honey or the beekeeper's name must be declared on the entry description. It must be **honey mead only, fruit mead is ineligible.** Mead categories are **M1A Dry Mead, M1B Semi-Sweet Mead and M1C Sweet Mead.** Mead will be judged on Colour (15 points), Clarity (20 points), Bouquet (25 points), Flavour (25 points), and Body (15 points) for a total of 100 points.



YARRA VALLEY
BEE
GROUP